



Scott Avenue Improvements

Brooklyn Community Board 4 – Environmental Protection, Transportation & Sanitation Committee
April 21, 2025



Public Realm Feedback Loop



Community Partnership + Engagement



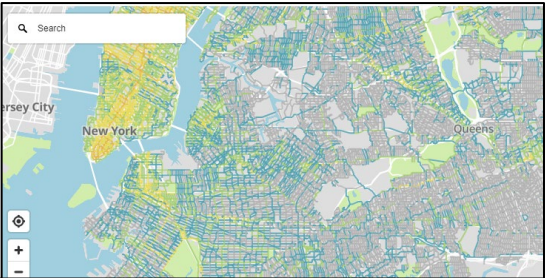
Open Streets



Crossings + Intersections



Dynamic Curb + Corridor Strategies



Comprehensive Planning + Policy



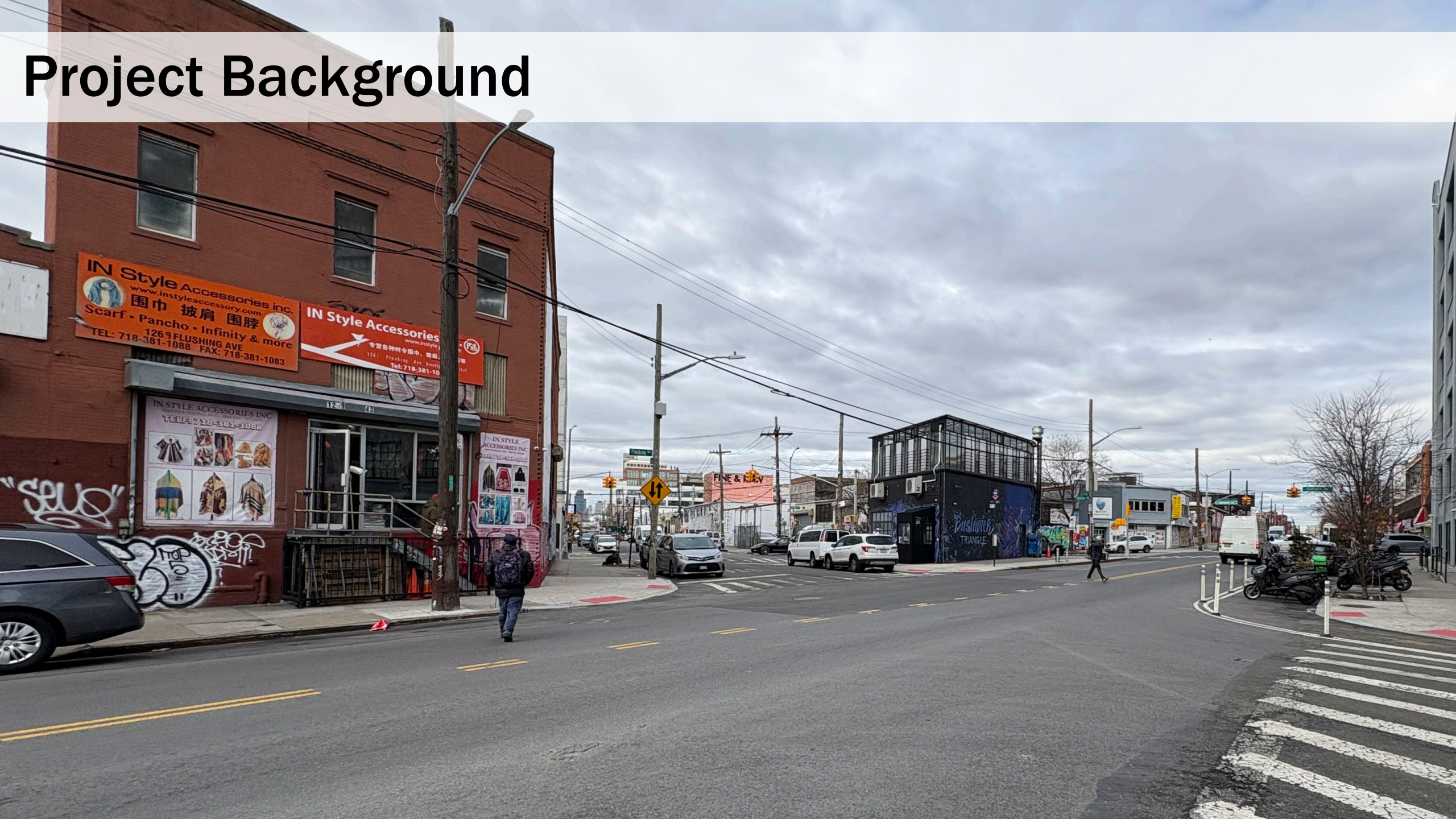
Equity Focused Maintenance



Programming + Concessions

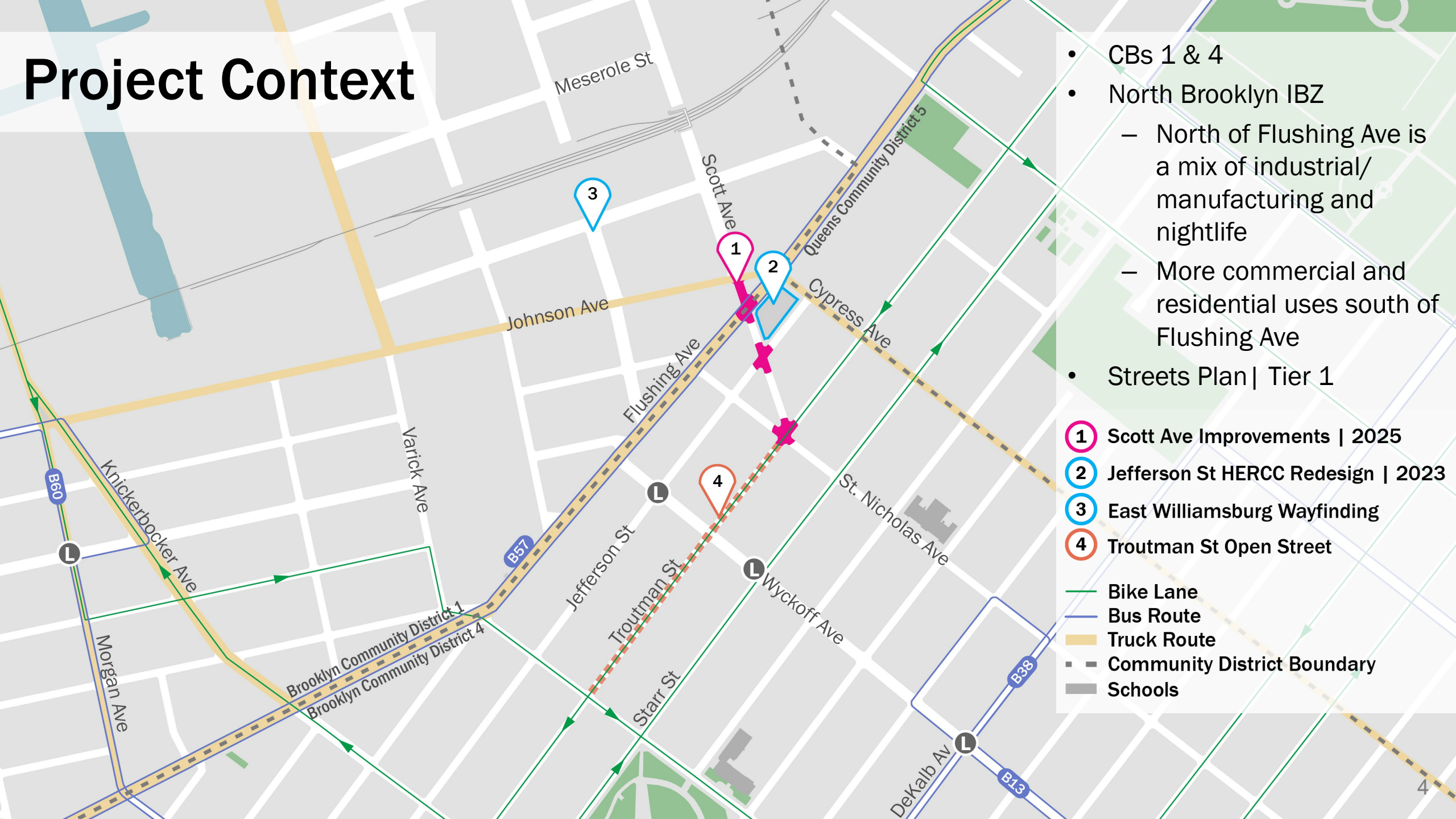


Premier Public Spaces



Project Background

Project Context



- CBs 1 & 4
- North Brooklyn IBZ
 - North of Flushing Ave is a mix of industrial/manufacturing and nightlife
 - More commercial and residential uses south of Flushing Ave
- Streets Plan | Tier 1

- ① Scott Ave Improvements | 2025
- ② Jefferson St HERCC Redesign | 2023
- ③ East Williamsburg Wayfinding
- ④ Troutman St Open Street
- Bike Lane
- Bus Route
- Truck Route
- - Community District Boundary
- Schools

Safety Data



2020 – 2024 (5 Years)

- Scott Ave is an important connection to pedestrian bridge, which is one of the few access points over the rail lines in the area

Scott Ave Injury Summary, 2020-2024 (5 years)

	Total	Severe	Fatalities	KSI
Pedestrian	4	1	0	1
Bicyclist	2	0	0	0
Motor Vehicle	32	0	1	1
Other Motorized	1	0	0	0
Total	39	1	1	2

KSI = Killed or Severely Injured



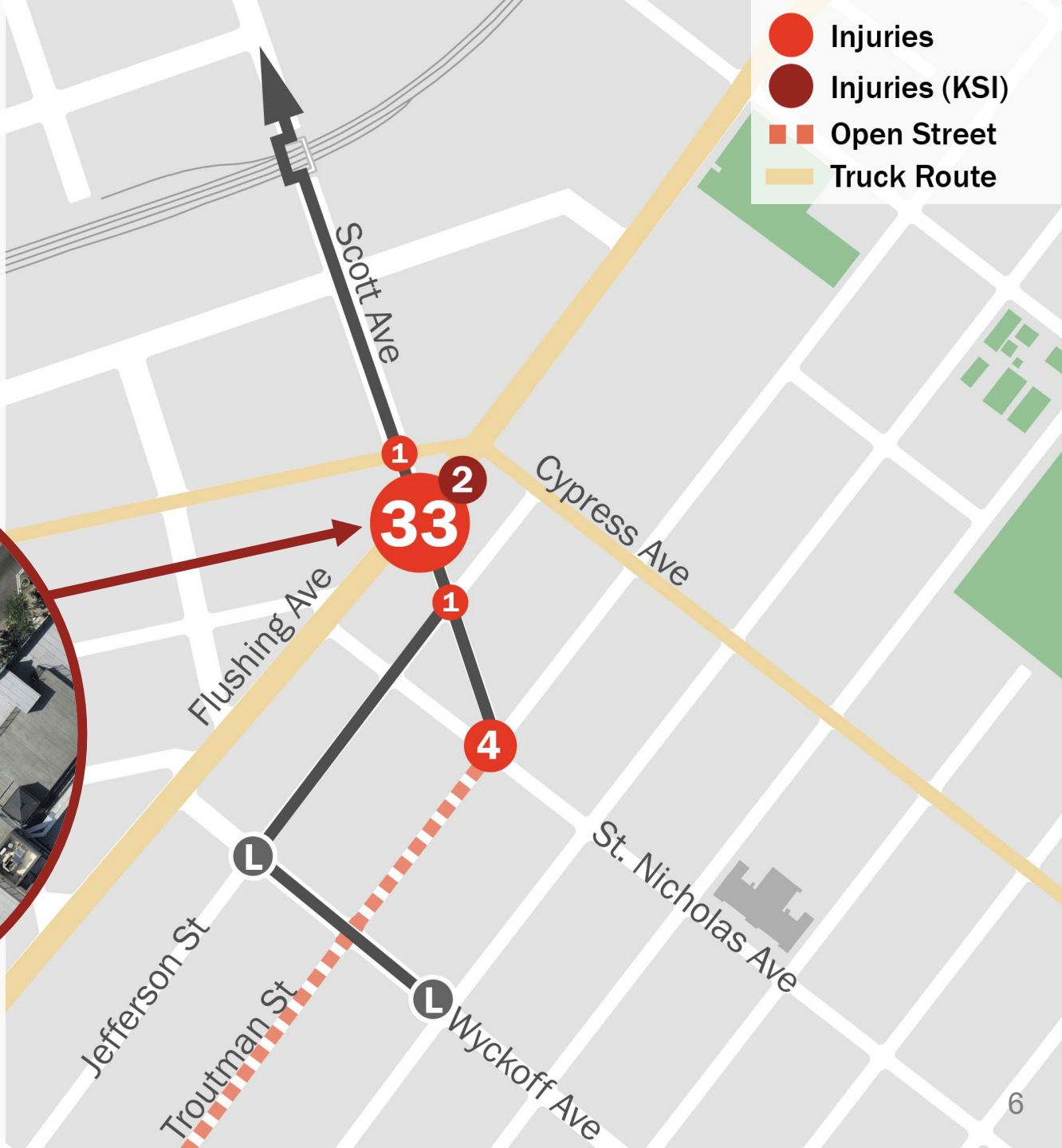
Safety Data



Scott Ave & Flushing Ave



2021: Severe Pedestrian Injury
2024: Motorist Fatality



Project History

2023:

- Jefferson St. HERCC Improvements

2024:

- NYC DOT East Williamsburg Wayfinding Improvements (Ongoing)
- November:
 - Walkthrough with family of Philippe Haussmann, DOT, CBs 1 & 4, Councilmember Gutierrez, and representatives from BP Reynoso's Office
 - Community calls for Scott Ave improvements



What We've Heard

Issues:

- Hard for drivers to see oncoming traffic at Jefferson & Scott and Flushing & Scott because of parking and the angle of the street
- Speeding
- Failure to stop at stop signs
- Troutman, Scott, & St. Nicholas is hard to navigate for all users

Opportunities and Requests:

- Daylighting
- Increased pedestrian space
- Improved crossings
- Slowed traffic and narrowed roadways
- Traffic controls on Scott

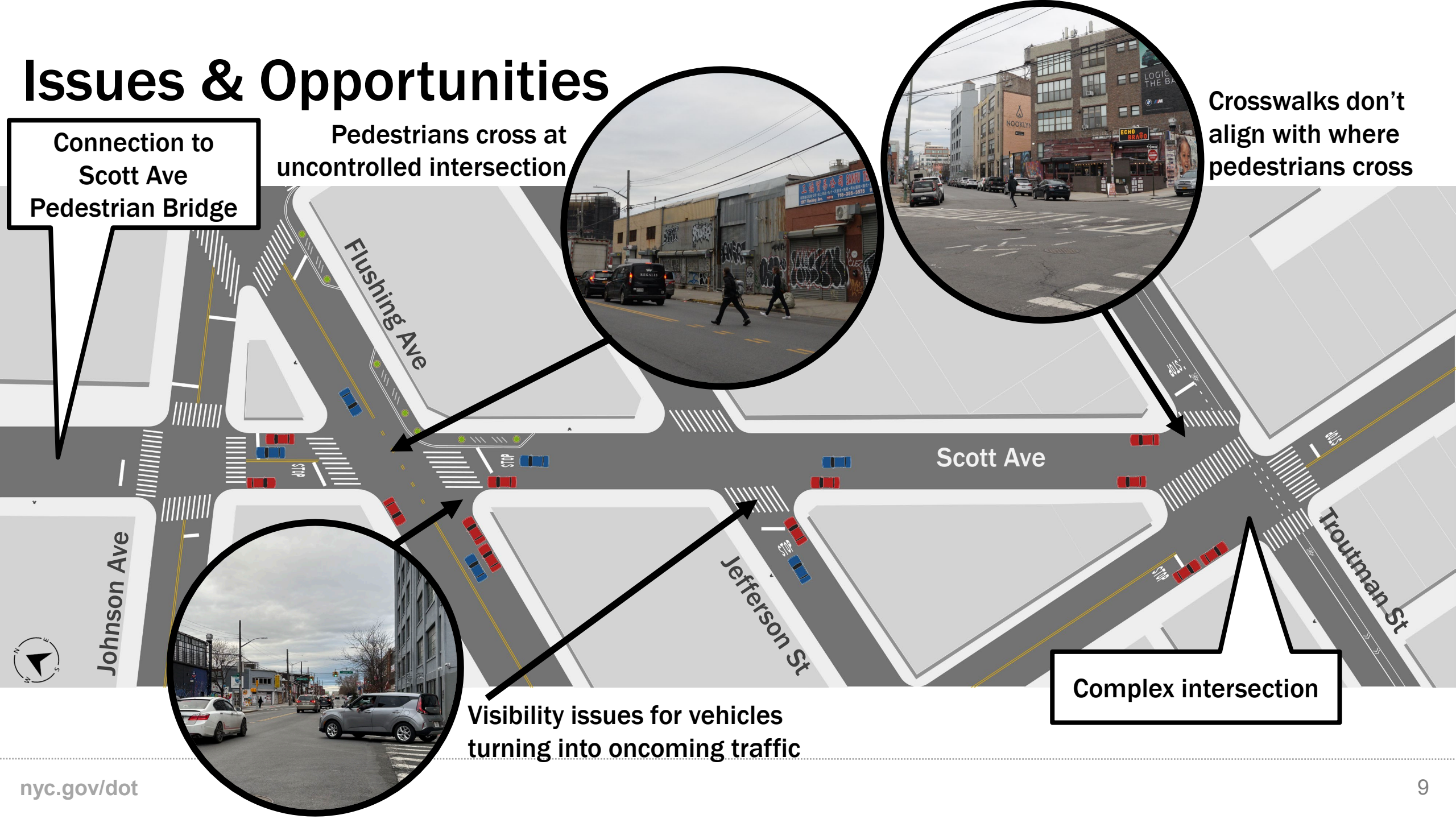


Issues & Opportunities

Connection to
Scott Ave
Pedestrian Bridge

Pedestrians cross at
uncontrolled intersection

Crosswalks don't
align with where
pedestrians cross



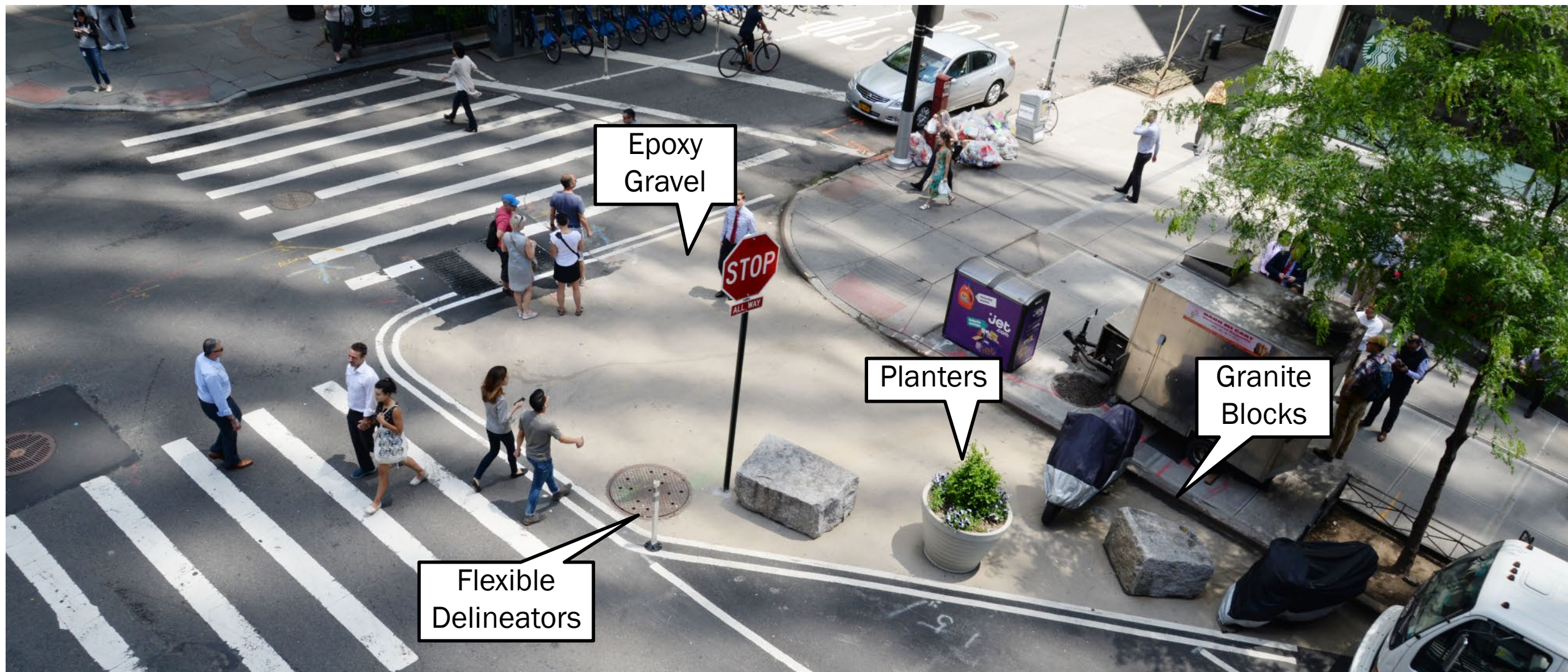
Visibility issues for vehicles
turning into oncoming traffic

Complex intersection

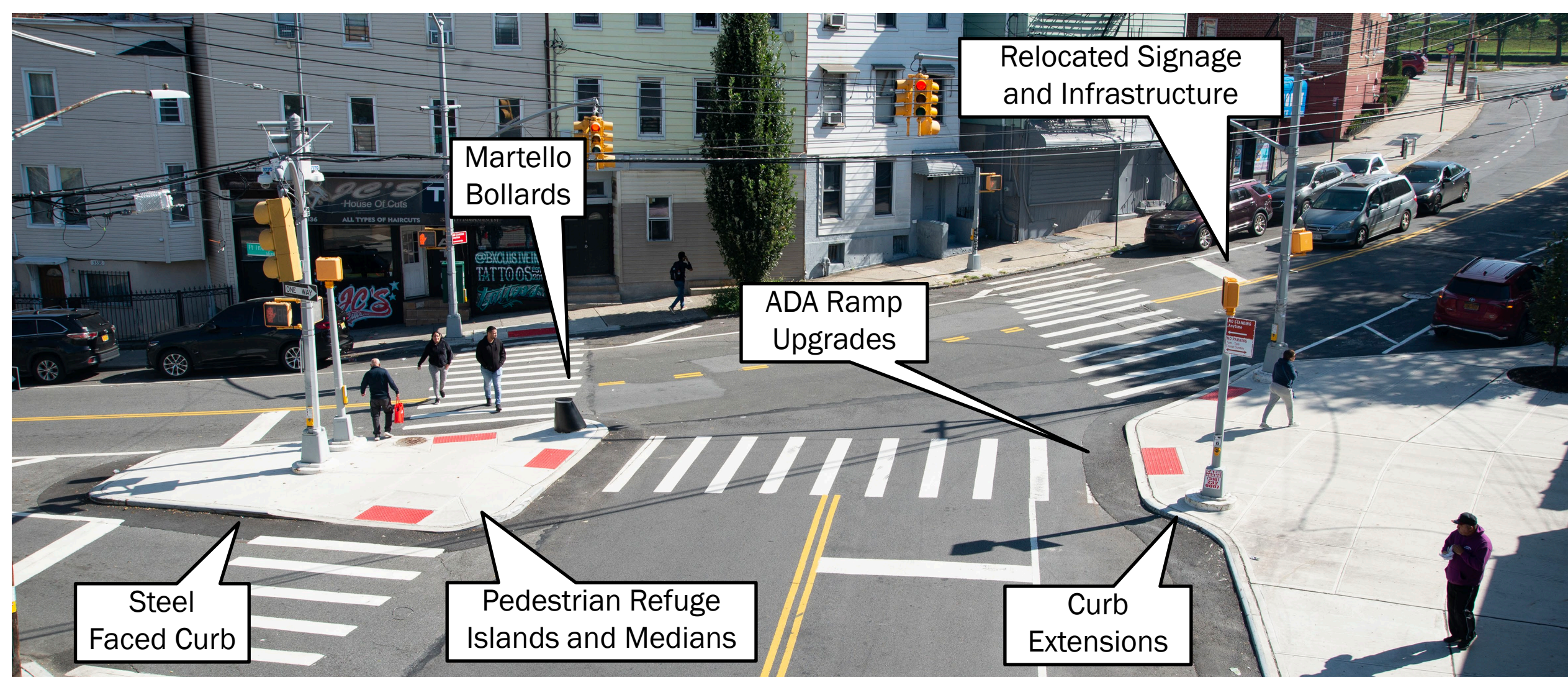
Proposal



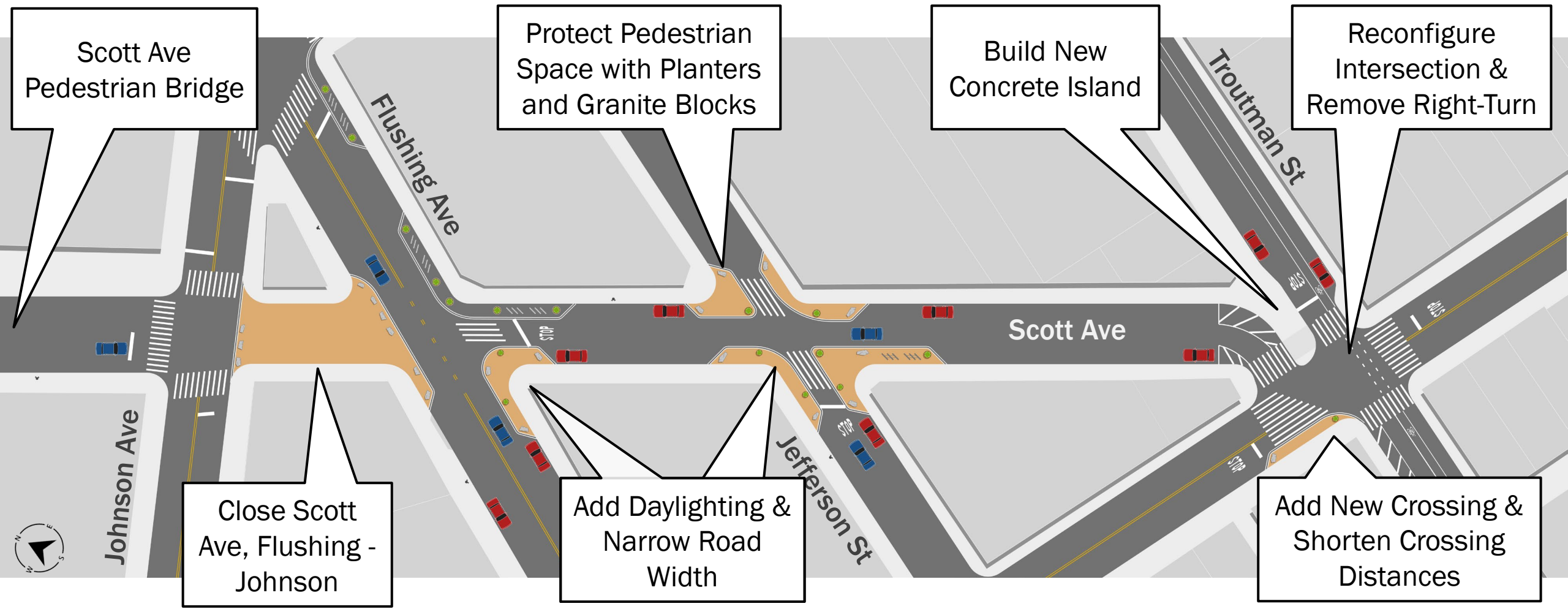
Pedestrian Improvement Toolkit



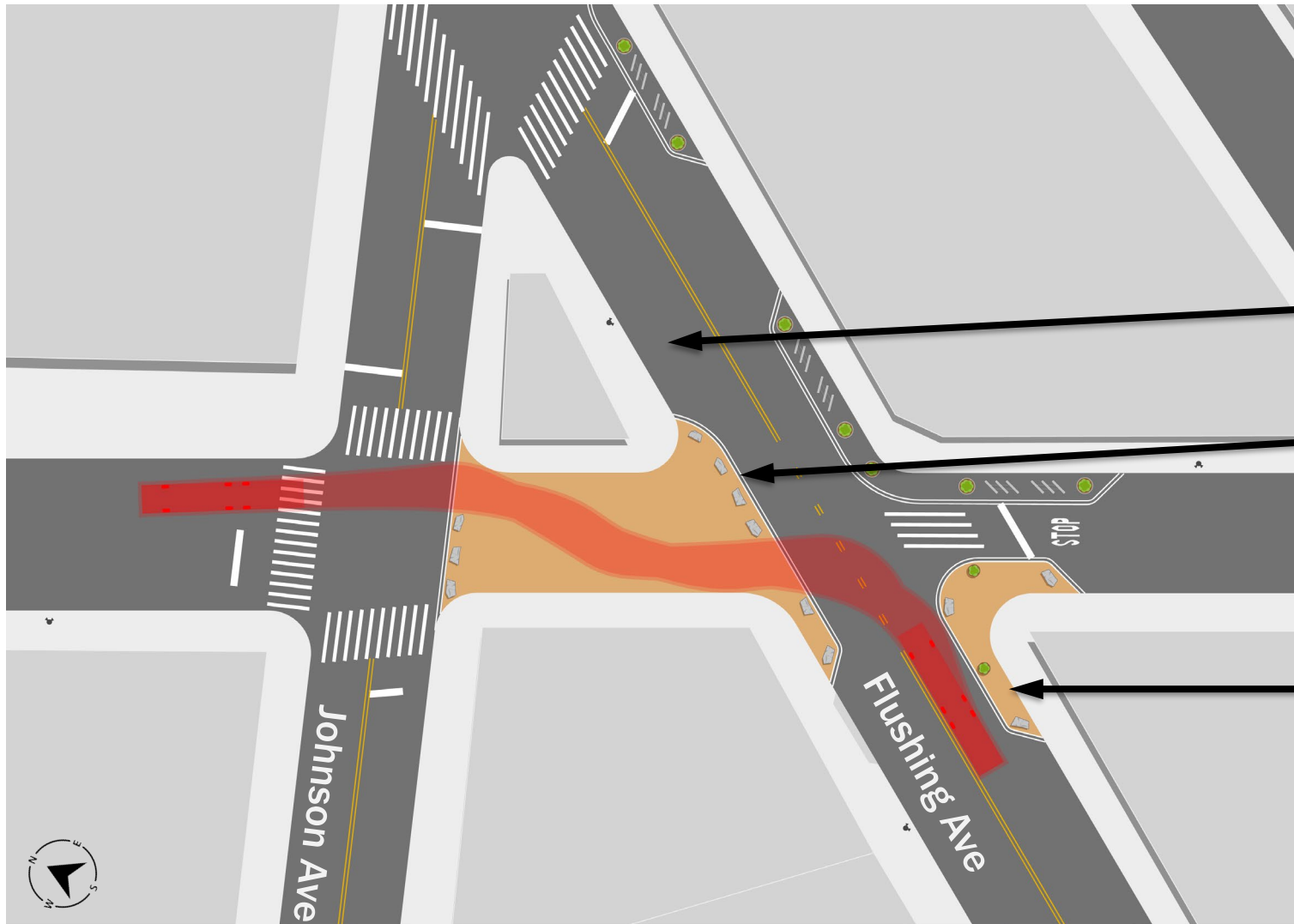
Pedestrian Improvement Toolkit



Scott Ave Design Proposal



Scott Ave, Flushing Ave – Johnson Ave



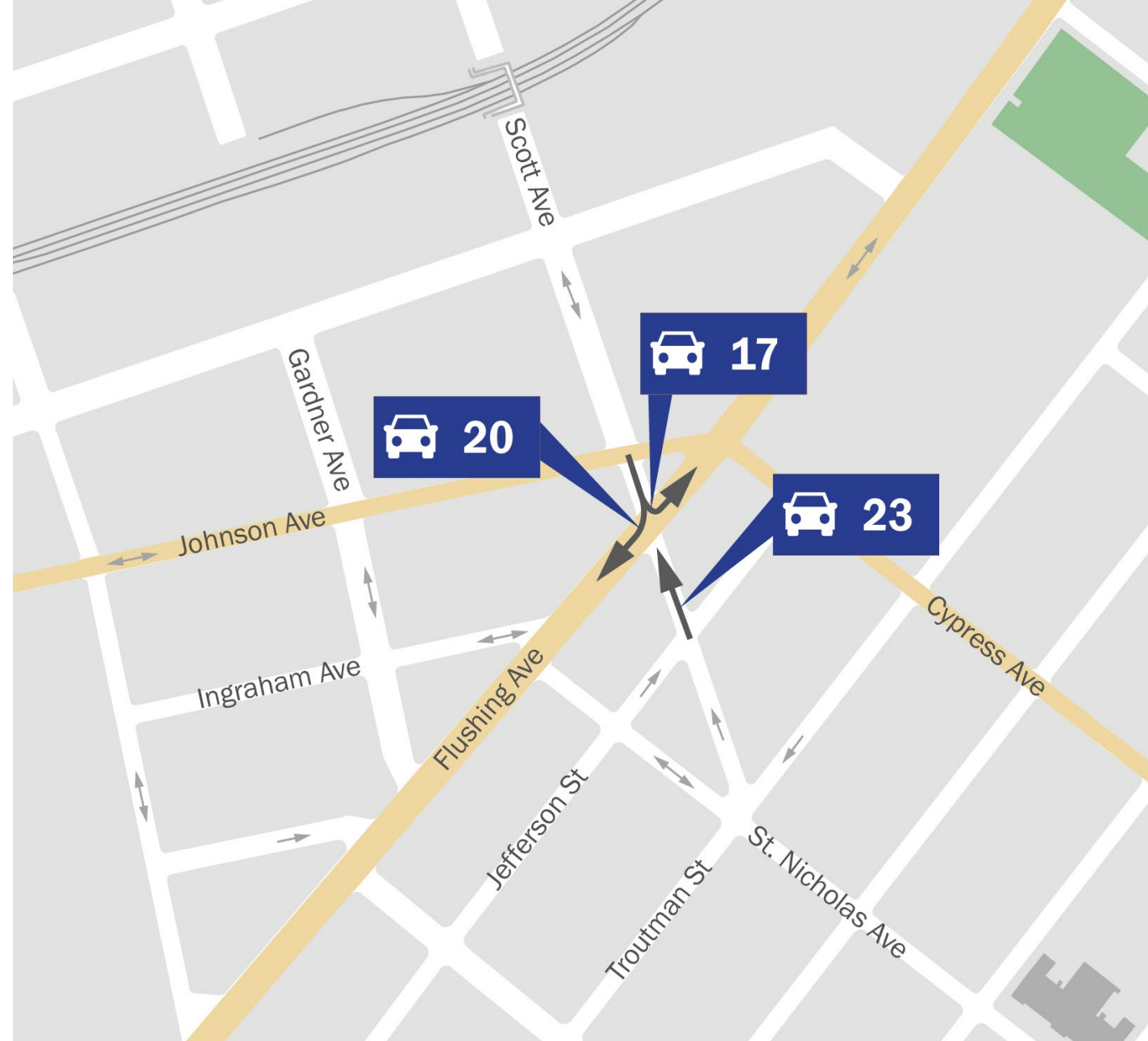
- Close Scott Ave, Flushing Ave – Johnson Ave
- Maintain B57 bus stop on Flushing
- Protect pedestrian space with granite blocks and barricades, but allow for emergency access
- Add more daylighting and improve visibility for vehicles turning onto Flushing Ave

Scott Ave, Flushing Ave – Johnson Ave

Existing Traffic Volumes

During afternoon peak hour:

- 1 vehicle every 3 minutes traveling north on Scott Ave (Jefferson – Flushing)
 - Most vehicles (>1 per min.) turning right onto Flushing
- <1 vehicle per minute traveling south (Johnson – Flushing)

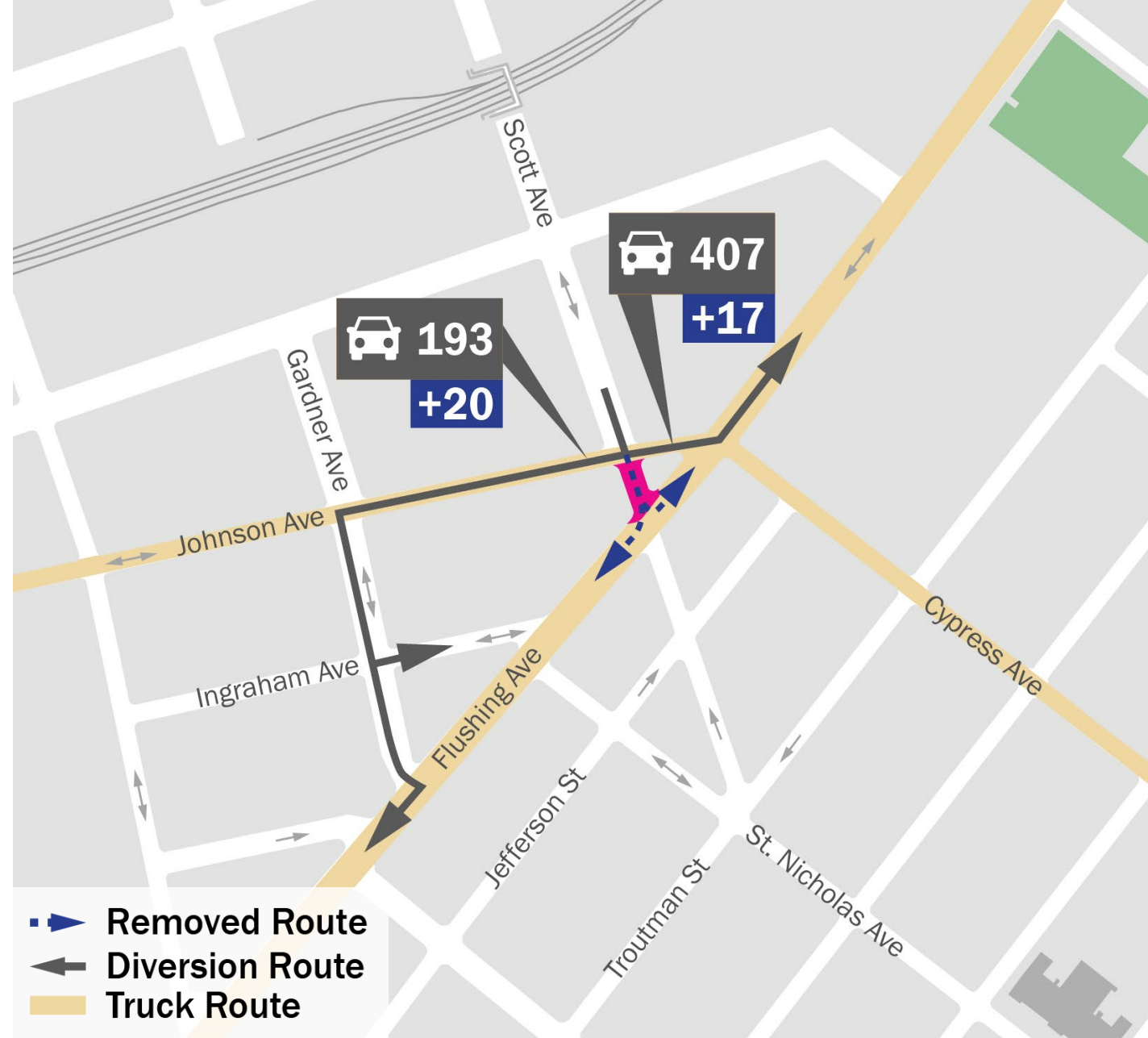


Scott Ave, Flushing Ave – Johnson Ave

Reroutes

Southbound:

- Use Johnson to Gardner for SW bound Flushing
- Use Johnson – Gardner – Ingraham loop for local access
- Trucks use Johnson to Morgan for Flushing

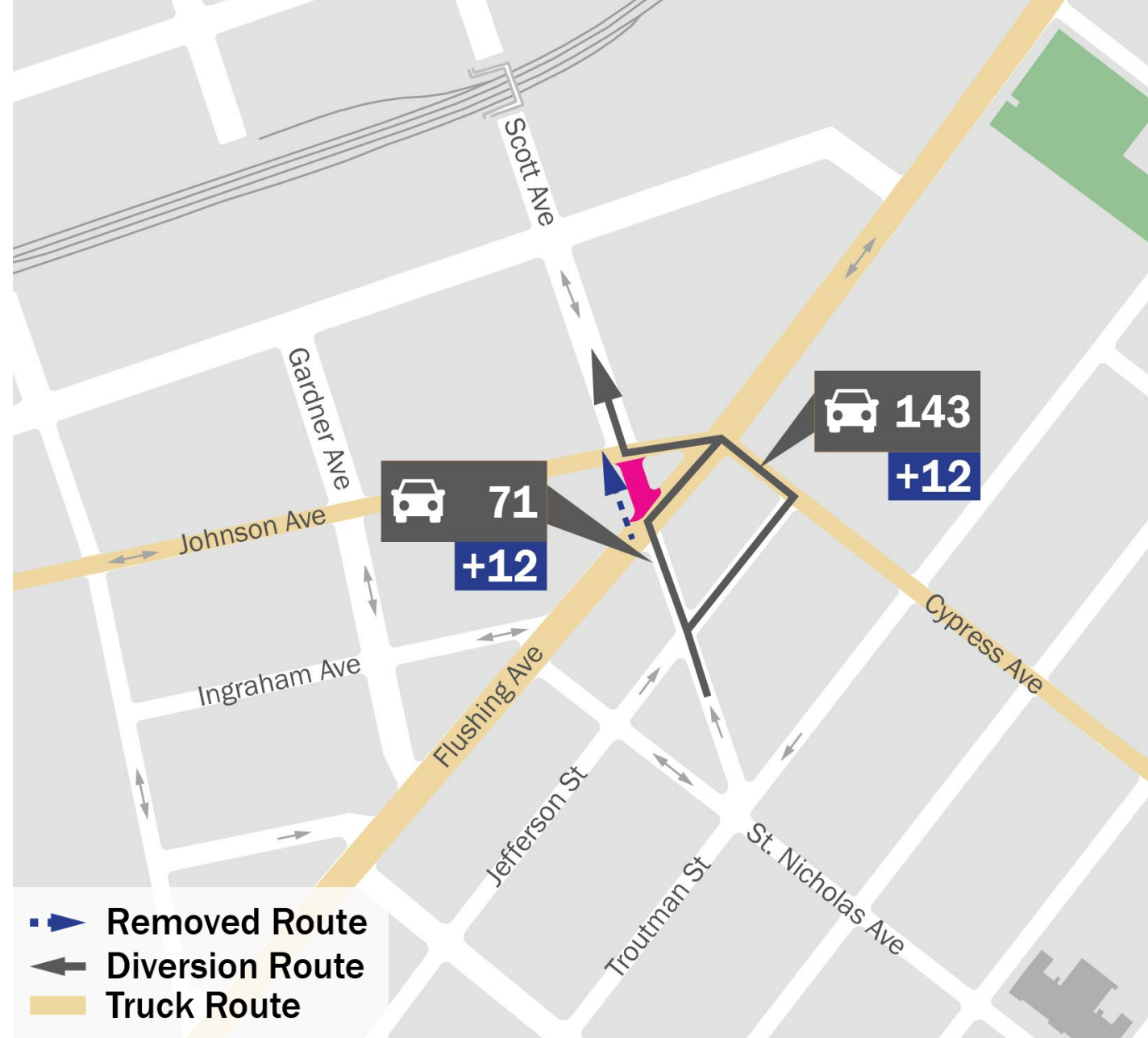


Scott Ave, Flushing Ave – Johnson Ave

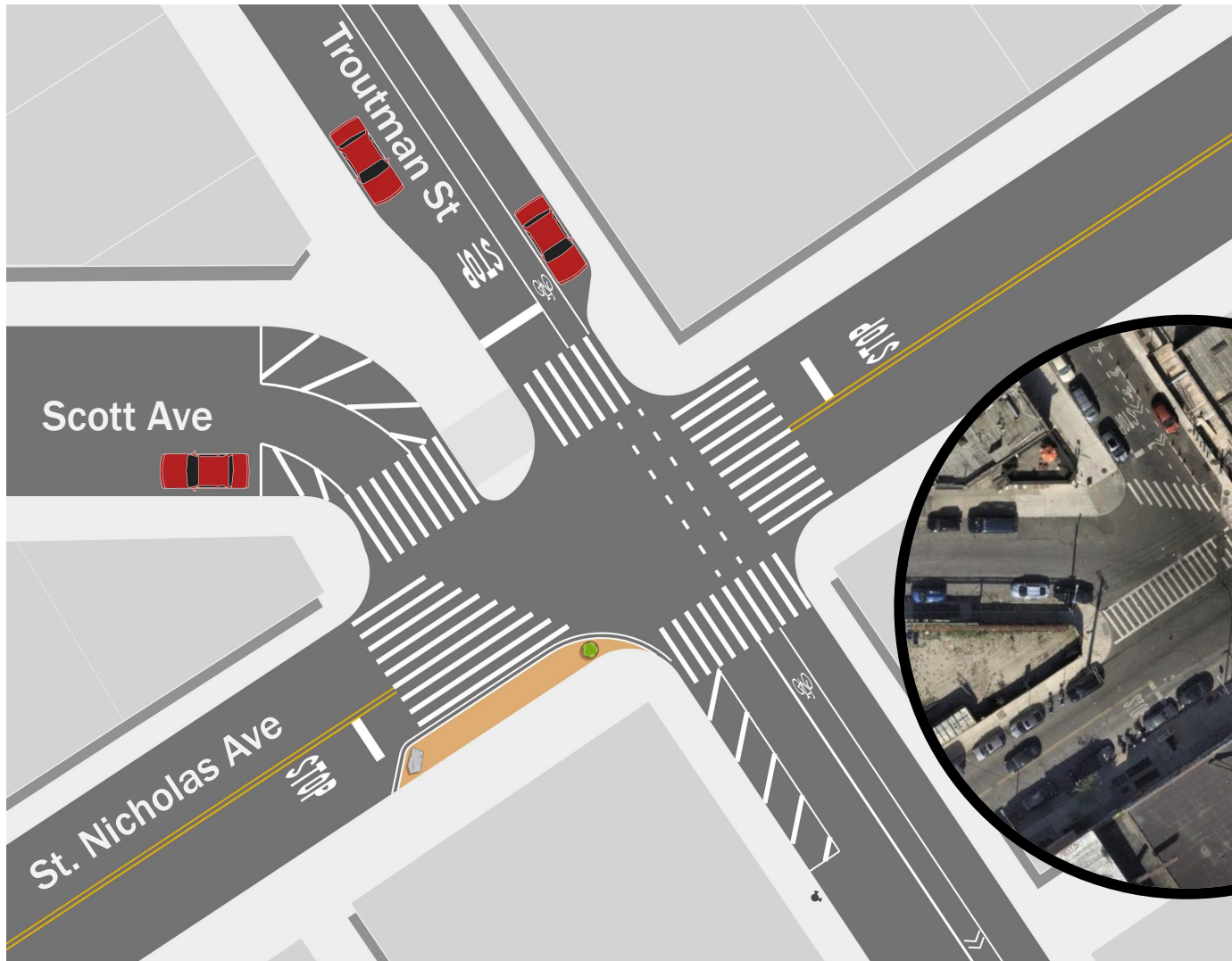
Reroutes

Northbound:

- Use Flushing to Johnson for access to Scott Ave
- Use Jefferson to Cypress/Johnson



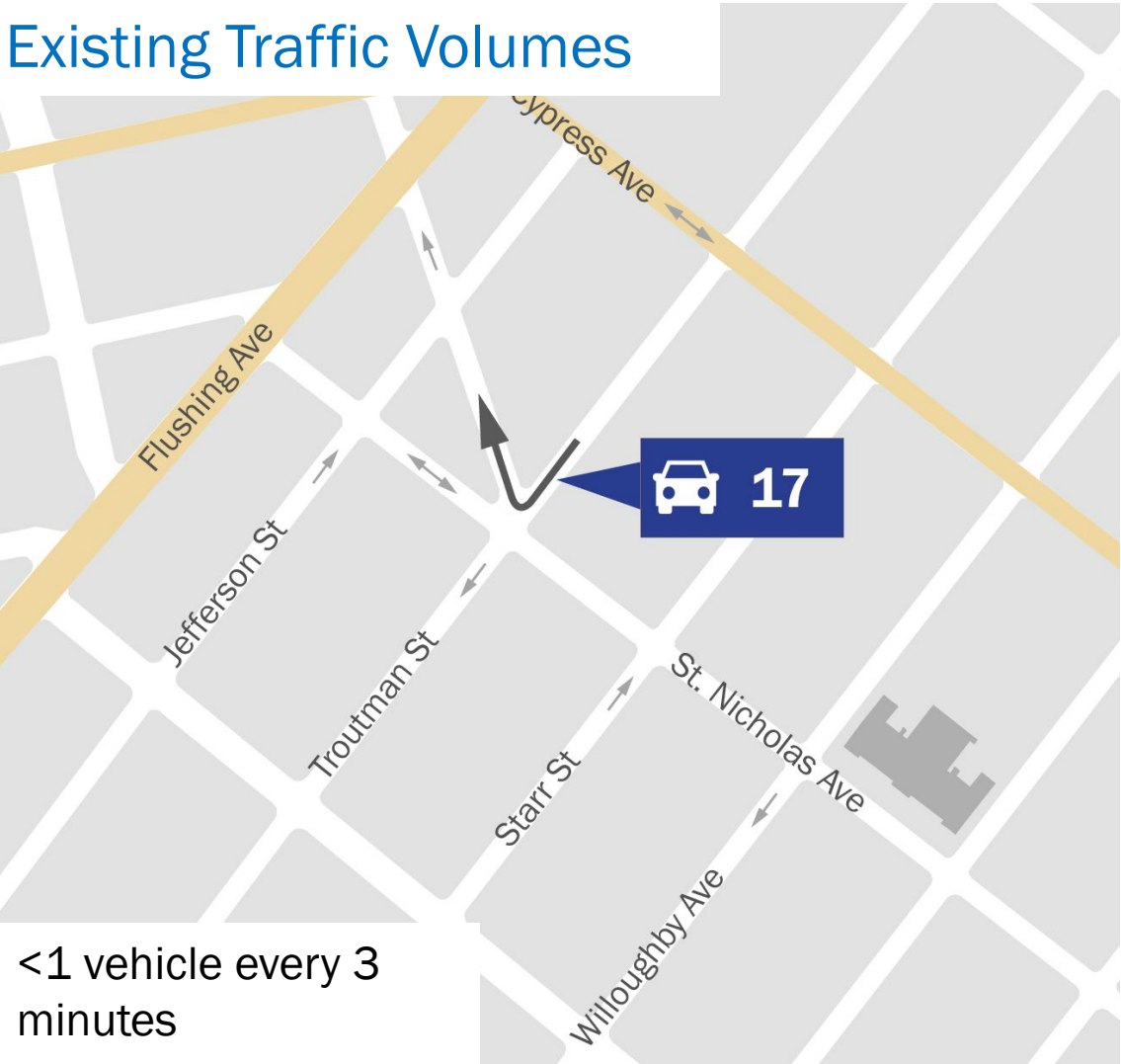
Scott Ave & Troutman St & St. Nicholas Ave



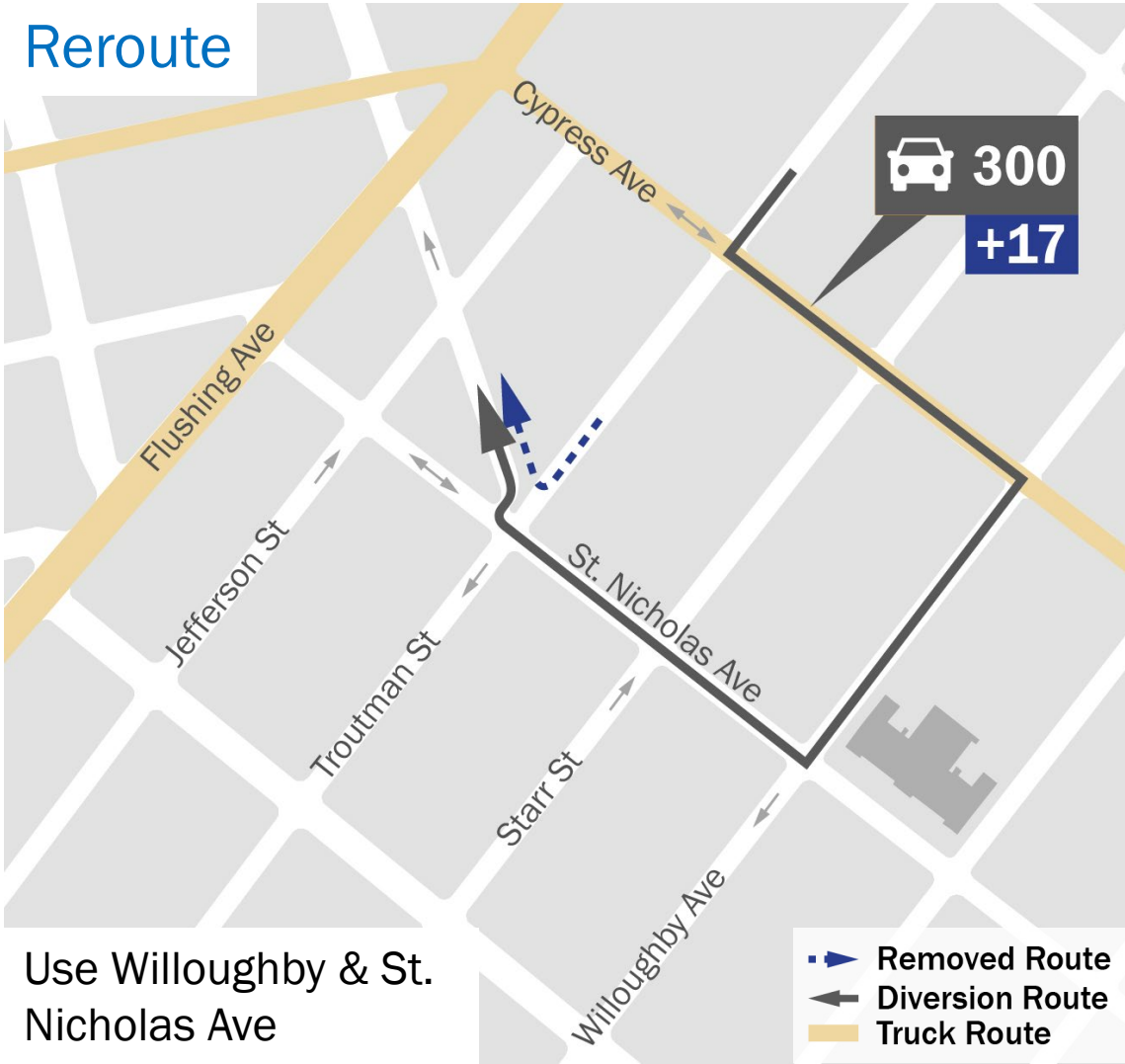
- Remove right-turn from Troutman St to Scott Ave
- Add concrete pedestrian island to normalize intersection
- Reduce crossing distances by realigning crosswalks
- Add new crosswalk and painted neckdown on St. Nicholas Ave

Scott Ave & Troutman St & St. Nicholas Ave

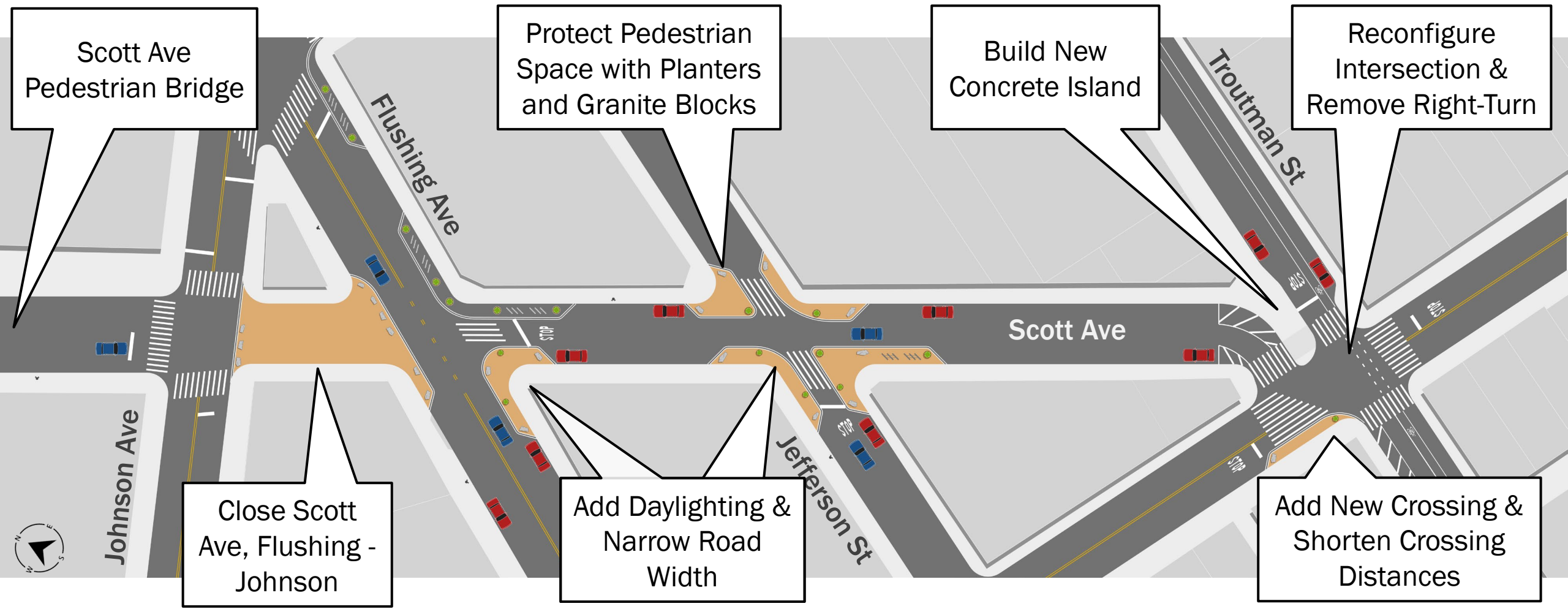
Existing Traffic Volumes



Reroute



Scott Ave Design Proposal



Next Steps & Project Schedule

2024	Summer	Fatality at Scott Ave & Flushing Ave
	Fall	Scott Ave & Flushing Ave approved for signal Scott Ave Walkthrough
	Winter	Traffic Analysis for closure and turn-ban
2025	Spring	Stakeholder Outreach Scott Ave & St. Nicholas Ave Resurfacing CB 1 & 4 Presentations Proposed Concrete Work Implementation (Scott Ave & Troutman St)
	Spring - Summer	Proposed Closure & Markings Implementation

Thank You Questions?



Appendix



Parking Change

